

Preliminary



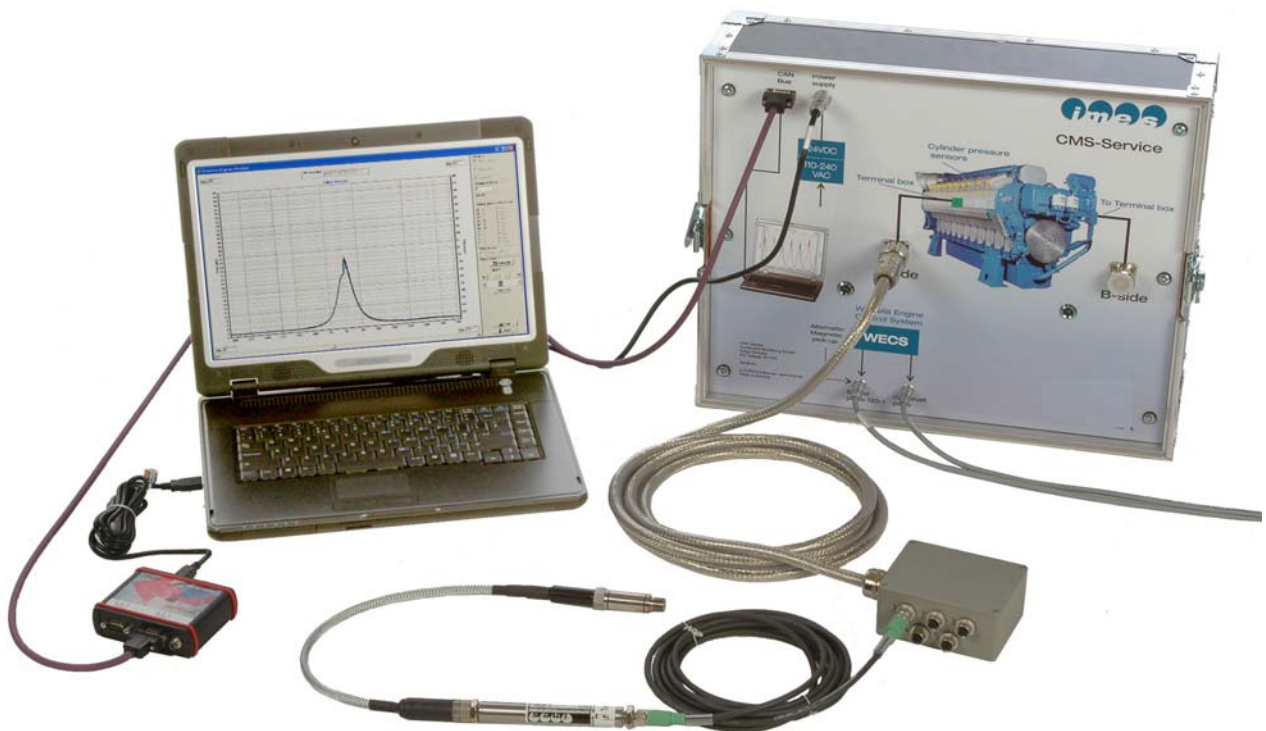
## CMS 2-stroke

*movable combustion monitoring system for 2-stroke Diesel Engines*

- Movable multi-channel cylinder pressure monitoring
- Optimized valve timing on electronically controlled 2-stroke diesel engines
- Advanced engine balancing
- Software from 4 - 12 cylinder application

### Application

- 2-stroke diesel engines 50....200 RPM

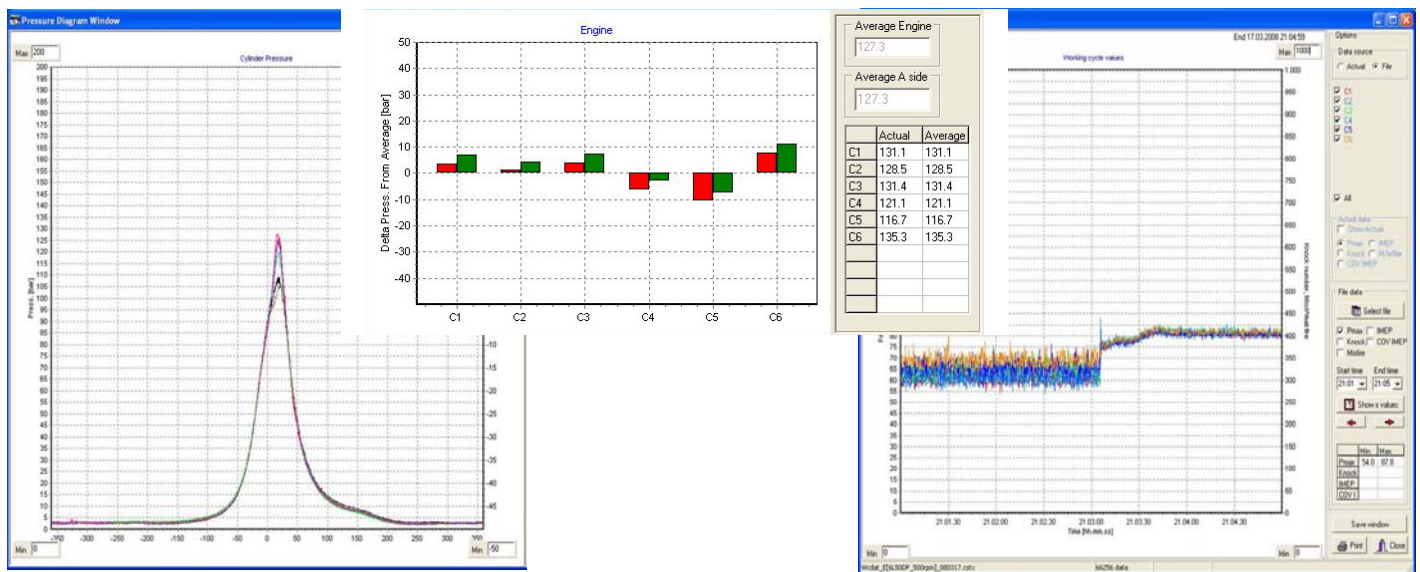




CMS 2-stroke is a digital system for data acquisition from the cylinder pressure sensors on 2-stroke diesel engines so that, as the fundamental variable that determines a combustion engine's operation state like Pmax, IMEP, IPOWER, cylinder pressure data can be acquired in real-time.

The main window of the visualisation software offers the possibility of selecting advanced monitoring functions in the following four diagrams:

- Pressure diagram
- Working cycle
- Pmax balance
- IMEP balance



## Scope of supply CMS 2-stroke

- Central unit incl. multi channel data acquisition unit
- Wide range power supply 90...264VAC
- Sensor terminal box for 1...6 cylinder
- Cylinder pressure sensor HTT-04 incl. thompson adaptor, 6pcs
- Pressure sensor connecting cable 5m, 6 pcs
- Magnetic pickup incl. magnet 1pc and inductive pickup 1 pc
- CAN-bus connecting cable 50 m
- Industrial Notebook PC incl. MS Windows XP Pro, English
- Can-interface incl. connecting cable
- Spare sealing ring for pressure sensor, 12 pcs
- Software for visualization and data acquisition from 4...12 cylinder
- User manual

## Option:

- Cylinder pressure sensor HTT-04
- Thompson Adaptor
- Sensor terminal box for 7...12 cylinder
- Pressure sensor connecting cable 5m

Part-no.

IW-7400

IW-6014

IW-1218

IW-9999

IW-1226