



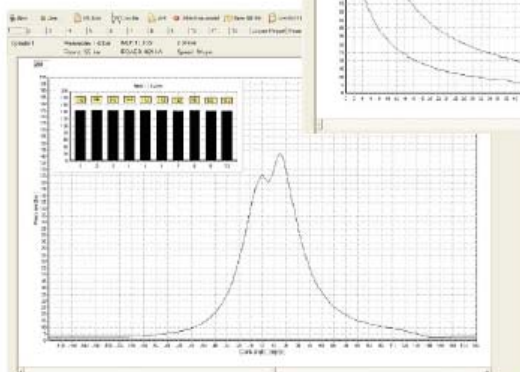
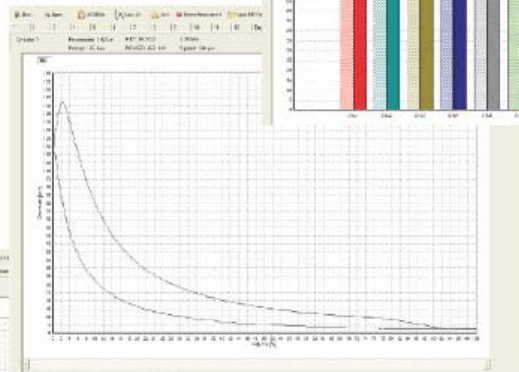
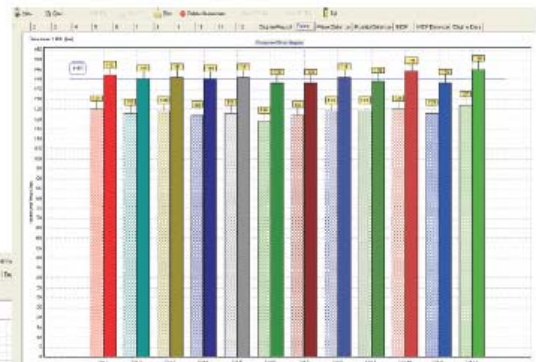
Electronic Pressure Indicator EPM-XP

for Diesel Engine application

- High accuracy
- Easy to operate
- Visualisation software included
- Battery charging from PC via USB port
- Excellent price performance ratio
- Pcomp calculation on 2-stroke engines
- Option :IPOWER and IMEP calculation

Application:

- 2 stroke engines: 40 - 300 RPM
- 4 stroke engines: 200 - 1500 RPM



EPM-XP will be supplied on Kawasaki Heavy Industries built MAN B&W two stroke engine (01/2010).

Hyundai Heavy Industries adopt EPI (Elektronik Pressure Indicator) as standard application for all newly coming MAN B&W MC/MC-C and Wärtsilä RTA/RT flex engines (04/2010).



The user friendly EPM-XP is a powerful electronic indication device. It serves to analyze 2- and 4 stroke large diesel engines in connection with HTT cylinder pressure sensor.

The EPM-XP contains the basic components, handheld data acquisition unit calibrated together with HTT cylinder pressure sensor as well as data acquisition and analysing software. Commercially re-chargeable batteries are used.

All the measured data can be downloaded via USB port to a PC where the EPM-XP visualisation software is installed.

Technical-data

Electronic Indicator EPM-XP	
Measuring range	0...300 bar
Accuracy (EPM-XP unit incl. HTT sensor)	+/- 0,5 % full scale
Max. temperature at measuring cell	300 °C
Storing capacity	20 measurements / engine
Interface	USB
Battery	1 * E-Block re-chargeable NiMh
Weight	500 g
Dimension	180 x 84 x 52 mm

Scope of supply

- EPM-XP incl. instrument case
- EPM-XP unit incl. protection cover
- HTT cylinder pressure sensor(1m length)
- Battery 1 x E-Block NiMh re-chargeable
- Visualisation software (Pressure diagram, Pmax diagram
Engine report, Pmax balancing diagram)
- USB connecting cable
- Thompson adaptor(W27x1/10") incl. mounting tool
- Instrument case
- Documentation

Part no.

IW-1520

Option :

- Software for IPOWER- and IMEP calculation IW-1554
- Software for IPOWER- and IMEP calculation, incl. p/v diagram,
Pcomp diagram, IMEP diagram and IMEP balance diagram IW-1555