

Cylinder Pressure Sensor HTT-04

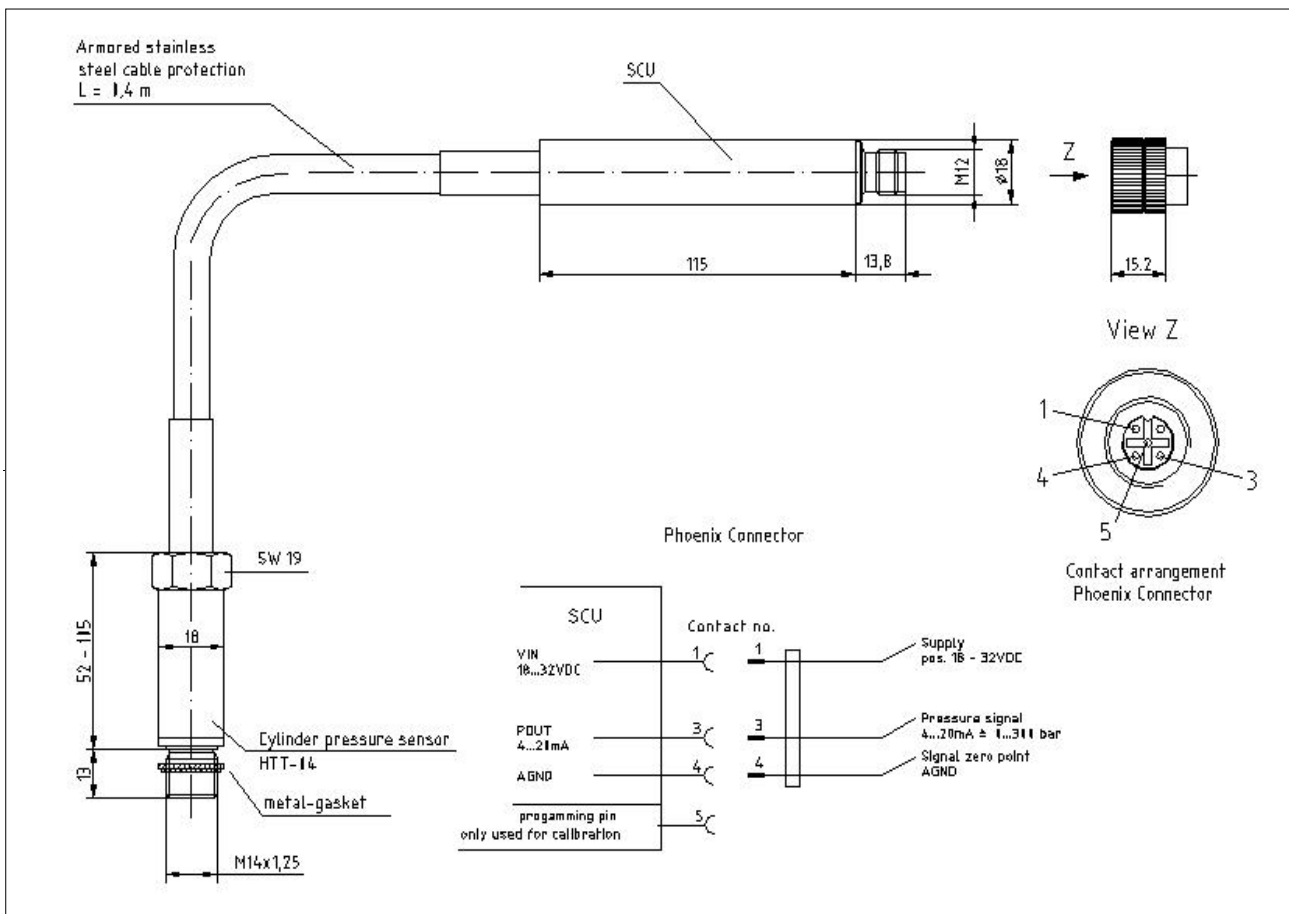
for continuous monitoring on Diesel- and Gas Engines

- High Medium temperature
- Long Life
- Designed life expectancy of 16.000 h @ 1500 rpm
- Digital electronic with event storing
- Improved thermodynamic performance



Application:

- Internal combustion engines
- Diesel, natural gas and alternative fuels
- Natural gas compressors
- Marine engines





Optimum sensor life is achieved at an average temperature at the measuring element of 200 - 250 °C.

This can always be achieved with a setback location so that good heat dissipation to colder components is possible.

The life expectancy of the sensor has been designed so that the life of 16.000 h or more can be achieved in a gas engine at 1500 rpm.

Technical-data

Cylinder pressure sensor HTT-04	
Measuring range pressure	0...300 bar
Overload pressure static	400 bar
Load cycles	$\geq 10^8$
Frequency range	2 kHz
Thermal shock 1500 RPM pmi=9bar	$\leq +/-0,5$ bar
Max. temp. at measuring cell	300 °C
Temperature range of SCU	-40 °C ...+ 75 °C
Supply voltage	18...32 VDC
Output signal pressure	4...20 mA
Electrical connector	Plug DIN M12
Thread	M14 x 1,25
Type of protection	IP 65
Dimension sensor	52 mm , Ø 18 mm
Dimension electronic	115 x 18 mm
Tightening torque	25 Nm
Weight incl. Electronic	250 g

Scope of supply

Part-No.

HTT-04
metal gasket

IW-6014
IW 4102

Accessories

Part-No.

cable length
5, 10, 15, 20, 25 m

IW 4110...14