

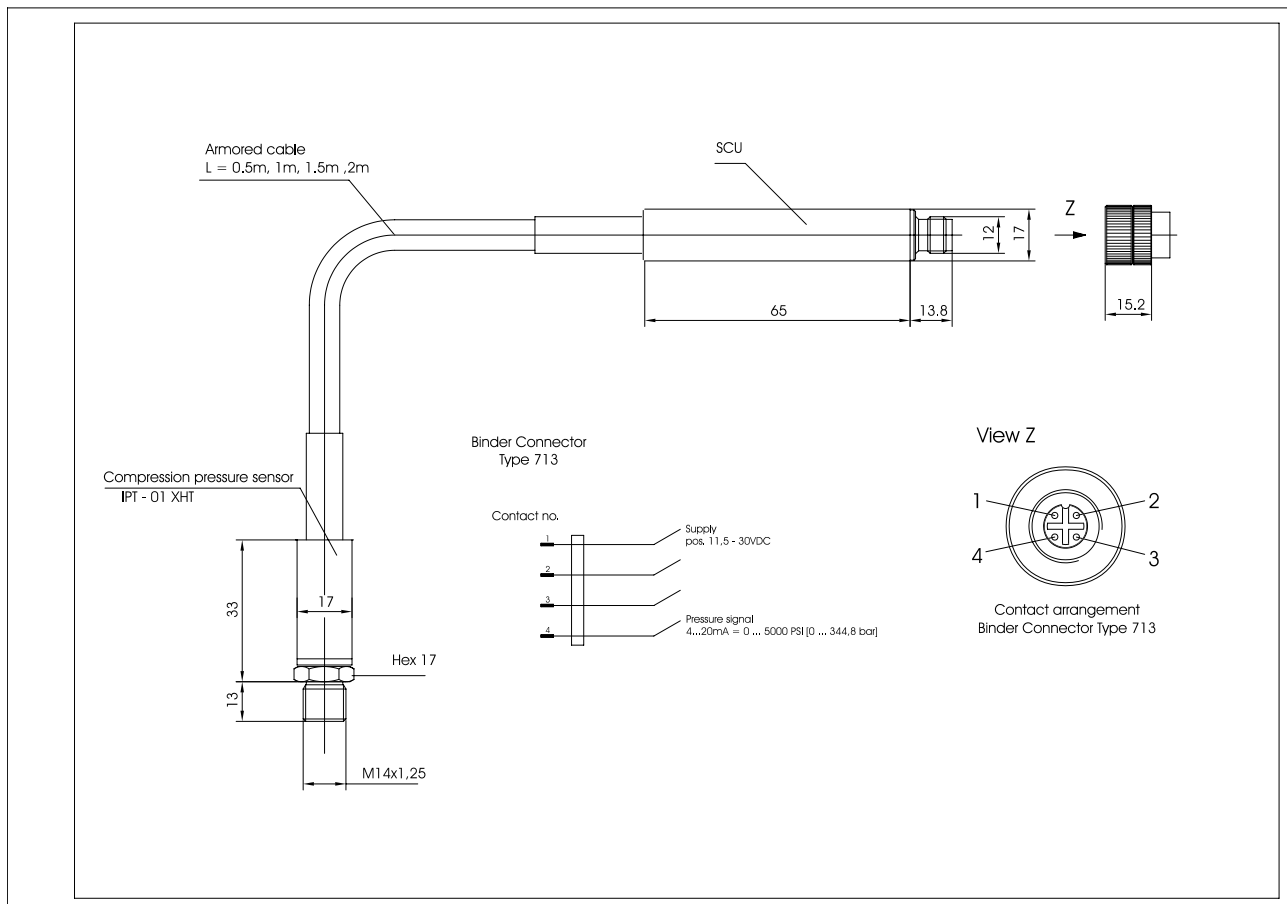
Injection Pressure Sensor IPT-01XHT

for injection- and compression pressure monitoring on Diesel Engines and Gas Compressors

- High pressure thread connection
- High medium temperature
- CUL - Approval

Application:

- High pressure measurements on compressions pumps
- For pressure measurements in hydraulic system





IPT-01XHT sensor installed on Kiene valve

On Gas Compressors the application of the sensors is for real time pressure inputs from the compressor cylinders.

For example:
indicated HP, rod load, volumetric efficiencies.

On fuel pumps the sensors are used to identifying wrong injection timing.

Technical-data

Injection pressure sensor IPT-01XHT	
Measuring range pressure	0...100, -400, -1000, -1500, -2000 bar
Overload pressure	250, 600, 1600, 2300, 3000 bar
Linerarity	typ. 0.2% FS
Repeatability	0.1% FS
Thermal effect on zero	typ. 0.2% FS/10K
Thermal effect on span	typ. 0.1% FS/10K
Dynamic long threm stability	+/- 1% FS per year
Operating temperature	max. 200°C (sensor) ; max. 125°C (electronic)
Excitation voltage	11.5...30 VDC
Output signal	4...20 mA, 0...10 V
Electrical connection	M 12 -Plug connection
Pressure connection	M14 x 1,25 , other threads available
Dimension	33 x Ø 17 ; SW 17 mm
Tightening torque	30 NM
Weight	250 g

Scope of supply

IPT-01XHT
Copper gasket

Part-No.

5222211101501
IW 4101

Accessories

Cable length
5, 10, 15, 20, 25 m

Part-No.

IW 4120...24