

Check-box

Interface device for sensor data evaluation

- Data interface from sensor to check-box
- Read out of stored max. pressure, max temperature and engine operating hours
- Actual Pmax- and Tmax reading during engine operation



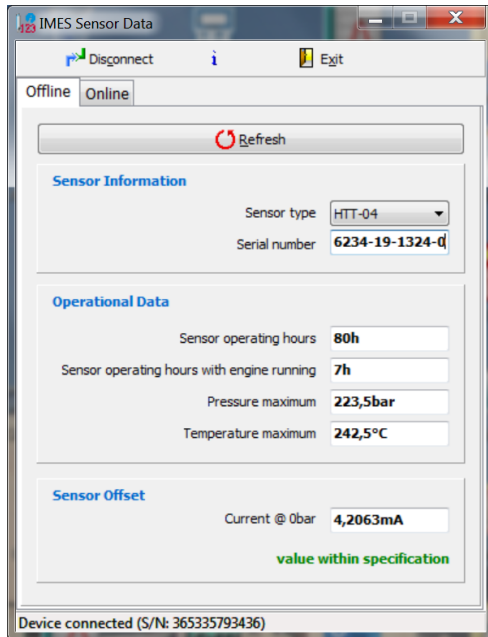
Application

- All types of IMES sensors

Technical Data

Read out from sensor electronic (SCU)	- sensor operating hours
	- sensor operating hours while engine running
	- pressure- and temperature maximum
	- sensor offset @ 0 bar
A/D resolution	21 Bit
Interface to PC	USB
Interface sensor	Serial interface
Dimension	90 x 60 x 25 mm
Weight	620 g

Check_box_en_01_2020



For reading out the stored sensor operation data the check-box is connected to the sensor SCU by serial interface and via USB to a PC.

The check-box visualisation software reads out the stored operation data of SCU and pressure @ 0 bar. It can be additionally used for sensor checking of Pmax and Tmax during engine operation.

Scope of supply

Part no.

Check-box

IW-4144

- Sensor check-box
- USB connecting cable (1m)
- Sensor connecting cable (0,25m) M12 –M12 connector
- Sensor connecting cable (0,25m) M12 –CA connector
- USB stick incl. Visualisation software and documentation
- Transport box (Dimension: 25 x 20 x 7 cm) , Weight: 600 g